

**Full Paper for NANOMAN2024(2~4pages)**  
**Title Here in English(Arial Narrow 24pt)**

(Name in English, Arial Narrow 12pt) Firstname Lastname<sup>1</sup>, John Smith<sup>1</sup>, Ichiro Honda<sup>2, #</sup> and Wei Chang<sup>1</sup>

(Arial Narrow 7.5pt) 1 Department of Mechanical Engineering, ABCD University, 123 Shattuck St., Berkeley, CA 98000, USA  
2 Department of Mechanical Engineering, Shimane Institute of Technology, 23-7, Motomachi, Matue, Shimane, 222-2222, Japan  
# Corresponding Author / Email: ihonda@shimaneit.or.jp, TEL: +81-222-33-4444, FAX: +1-222-33-4444

**KEYWORDS:** (Arial Narrow 7.5pt), Precision machining, Cutting force, Carbon fiber, Cutting force

[illegible]

## NOMENCLATURE

a = directional orientation of the system

$$h = \frac{\text{strip thickness} \times \text{strip thickness}}{\text{strip thickness}}$$

in English using Times New Roman 9pt. Contents of the journal should be written in English using Times New Roman 9pt. Contents of the journal should be written in English using Times New Roman 9pt. Contents of the journal should be written in English using Times New Roman 9pt.

## 1. Introduction (Times New Roman 10pt)

[illegible]

Contents of the journal should be written in English using Times New Roman 9pt. Contents of the journal should be written in English using Times New Roman 9pt. Contents of the journal should be written

## 2. Extension of Two-Dimensional Model to the Turning Process (Times New Roman 10pt)

## 2.1 Simulation (Times New Roman 9.5pt)

[illegible]



Fig. 1 Block diagram of multi-modal chatter model of a high speed machining center (Times New Roman 9pt)

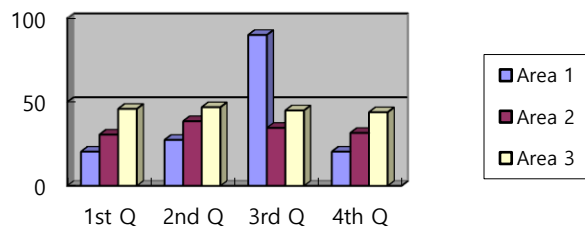


Fig. 2 Block diagram of multi-modal chatter model of a high speed machining center

### 2.1.1 Simulation (Times New Roman 9.5pt)

Contents of the journal should be written in English using Times New Roman 9pt. Contents of the journal should be written in English using Times New Roman 9pt. Contents of the journal should be written in English using Times New Roman 9pt. Contents of the journal should be written When horizontal figure or table is inserted.

[illegible]

### 3. Conclusions (Times New Roman 10pt)

[illegible]

Table 1 Comparison of measured roughness data

Contents of Table	

[illegible]

## ACKNOWLEDGEMENT

Contents of the journal should be written in English using Times New Roman 9pt. Contents of the journal should be written in English using Times New Roman 9pt. Contents of the journal should be written in English using Times New Roman 9pt. Contents of the journal should be written in English using Times New Roman 9pt. Contents of the journal should be written in English using Times New Roman 9pt.

## REFERENCES

1. Font: Times New Roman 9pt. Tlustý, J., Smith, S. and Zamudía, C., “Operation Planning Based on Cutting Process Model,” Int. J. Precis. Eng. Manuf.-Green Tech., Vol. 39, No. 12, pp. 517-521, 1990.
2. Tlustý, J., Smith, S. and Zamudía, C., “Operation Planning Based on Cutting Process Model,” Int. J. Precis. Eng. Manuf.-Green Tech., Vol. 39, No. 12, pp. 517-521, 1990.
3. Tlustý, J., Smith, S. and Zamudía, C., “Operation Planning Based on Cutting Process Model,” Int. J. Precis. Eng. Manuf.-Green Tech., Vol. 39, No. 12, pp. 517-521, 1990.